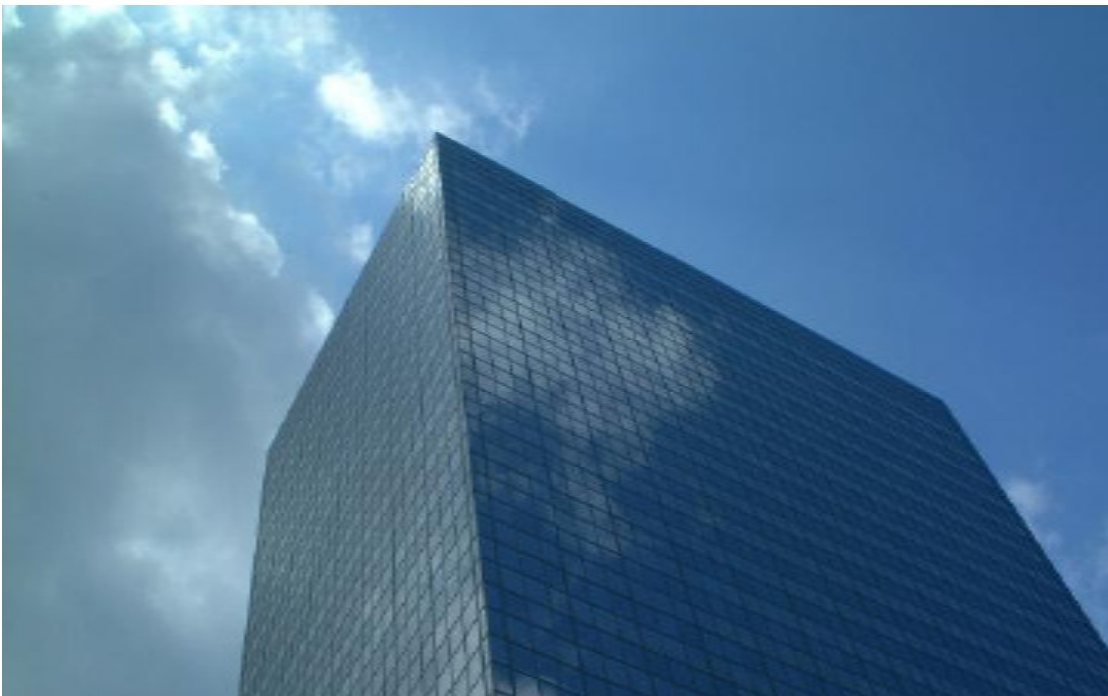


# **Richmond Hill**

## **Major Office Space Inventory**



July 2011

## Major Office Space Inventory

The Major Office Space Inventory provides a listing of major office buildings in Richmond Hill. The inventory includes multi-tenant office buildings, the majority of which are located in the Town's employment lands. To be considered as a major office, the building must fit the following criteria:

- **20,000 square feet or greater in size-** Major office is defined as buildings which are 20,000 square feet in size or greater. This definition is consistent with the Region of York's definition of major office in their employment land area analysis and is also used by the commercial real estate sector in their definition of office buildings.
- **Be primarily office space-** In order to be considered major office, the primary function of the building is required to be office employment. In some cases major office buildings will include a minor amount of retail space. This space is known as 'ancillary' retail as the retail portion is supplementary or of second importance to the primary office function of the building.
- **Includes office space for lease-** The inventory that is provided contains buildings with office space for lease and not buildings that are privately owned.

Note: Research pertaining to the Major Office Space Inventory was compiled and updated in July 2011. Please contact Economic Development staff for the most up-to-date information. While the Town of Richmond Hill makes every effort to ensure that the material provided herein is accurate, the Town of Richmond Hill does not make any warranty, either express or implied, nor does it assume any liability or accept any responsibility for the accuracy of this information. In no event shall the Town of Richmond Hill be liable for any direct, indirect, incidental, punitive or consequential expenses or damages resulting from the use of the information herein.

## Listing of Major Office Space

ID	Address	Building Name	Building Size (sq.ft.)	Year
1	9133 Leslie Street		223,864	
2	45 Vogell Road	Commerce Point	167,579	1991
3	225 East Beaver Creek Road	Town of Richmond Hill- Municipal Offices	137,518	1990
4	15 Wertheim Court	Park Place Corporate Centre	130,000	1989
5	1595 16 <sup>th</sup> Avenue	Menkes	120,554	1990
6	30 West Beaver Creek Road		120,000	1989
7	10 West Pearce Street		111,496	
8	95 Mural Street	Beaver Creek Centre 3	108,815	1989
9	38 Leek Crescent	Beaver Creek Business Park, Phase 2	100,000	2001
10	30 Leek Crescent	Beaver Creek Business Park, Phase 1	100,000	2000
11	30 East Beaver Creek		99,300	
12	100 York Boulevard	York Corporate Centre-1	97,500	1987
13	1725 16 <sup>th</sup> Avenue	Levis Strauss Building	85,000	1998
14	9050 Yonge Street	Executive Centre	75,000	1990
15	35 West Pearce Street	Capital Centre	72,460	1989
16	120 East Beaver Creek Road	Campus 2000- Signature Office- Phase 1	66,000	2001
17	9140 Leslie Street	Leslie Corporate Centre	65,000	2008
18	260 East Beaver Creek Road	Royal Bank Business Centre	62,655	1989
19	330 Highway 7 East	Chalmers Gate II	62,100	1992
20	9130 Leslie Street		60,000	2011
21	20 Wertheim Court	Beaver Court	56,500	1989
22	1650 Elgin Mills Road East	Elgin Mills Medical Centre	48,158	2010
23	350 Highway 7 East	Chalmers Gate, Phase 2	48,000	1990
24	60 Granton Drive	Granton Crt. Phase 1	47,000	1988
25	9011 Leslie Street	Parkway Executive Centre-2	45,000	1988
26	9555 Yonge Street	Yonge Observatory Centre	42,728	1988
27	100 Mural Street	Beaver Creek Centre-1	40,107	1987
28	125 Mural Street	Beaver Creek Centre- II	38,735	1987
29	250 Harding Boulevard West	Richmond Hill Medical Building	37,000	1988
30	30 Via Renzo Drive	iServe Executive Centre	34,000	2009
31	10350 Yonge Street	Yonge St. Professional/Medical Building	29,185	1975
32	500 Highway 7 East	National Bank of Canada	27,851	1987
33	650 Highway 7 East	Parkway Office Building	25,997	1988
34	100 Via Renzo Drive	Compugen Building- 3 <sup>rd</sup> Floor	25,000	2010
35	300 West Beaver Creek Road	Beaver Creek Square, Building B	24,000	1988
36	9251 Yonge Street	Carville Centre	20,398	1989



**Richmond Hill  
Major Office Space**

**Legend**

- Major Office Space
- Business Park



Richmond Hill, Corporate & Financial Services Dept.  
225 East Beaver Creek Road, Richmond Hill,  
Ontario, L4B 3P4. Copyright 2011, produced July 2011



**Disclaimer:**  
This information is provided as a public resource of general information by Richmond Hill. The information is provided for convenience only, and Richmond Hill disclaims any responsibility for content, accuracy, currency, or completeness. This is not a plan of survey.

**For more information please contact**

**The Town of Richmond Hill**

**Economic Development  
Strategic Initiatives Division**

**Tel: 905.771.5483/ 905.747.6382  
ecdev@richmondhill.ca**

**RichmondHillOnline.com**



**Facebook:** Richmond Hill Economic Development

**Twitter:** RH\_EcDev

**YouTube:** TownRichmondHill

**LinkedIn:** Richmond Hill Economic Development

**Flickr:** Richmond Hill Economic Development